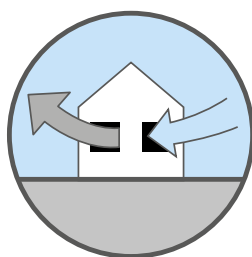




Residential & Commercial **Extract Ventilation**





HEAT RECOVERY VENTILATION

Ventilation with heat recovery is a clean and simple technology which provides great comfort and savings: it enables to create an hygienic microclimate throughout the home, combining comfortable living, protection of the building and energy efficiency.

It is particularly recommended for:



SAVINGS

- Lower heating and air conditioning bills.
- Low energy consumption.
- Optimising insulation investments (window frames, wall and loft insulation, roof) which would be wiped out with a natural ventilation system: on average, in fact, open windows lead to a loss of 50% of heat from the home.



WELLBEING

- Fresh, clean air at a comfortable temperature improves your quality of life and sleep.
- A clean and filtered air prevents allergens from multiplying and promotes the removal of pollutants.
- Low noise level: quiet equipment operation and protection from external noises.



PROTECTING YOUR PROPERTY

- Preventing damage caused by dampness and condensation.
- Preventing mould.
- Protecting the value of your property.



COMFORT

- Practical, versatile and customisable modular operation.
- A reliable system which ensures the correct ventilation in every season.
- The ideal solution for energy requalification of buildings.

DECENTRALIZED HEAT RECOVERY VENTILATION

Decentralized Heat Recovery Ventilation is a simple and smart solution!

5 Good reasons to choose it:

- Need to better the indoor air quality with punctual solutions for each kind of room
- Presence of an air quality or ventilation problem limited to a unique room or a small house
- Impossibility to install a centralized HR system
- Need to renovate or requalify the house at limited costs
- Avoid important masonry interventions

Guidelines for a correct ventilation



Selecting the correct fan

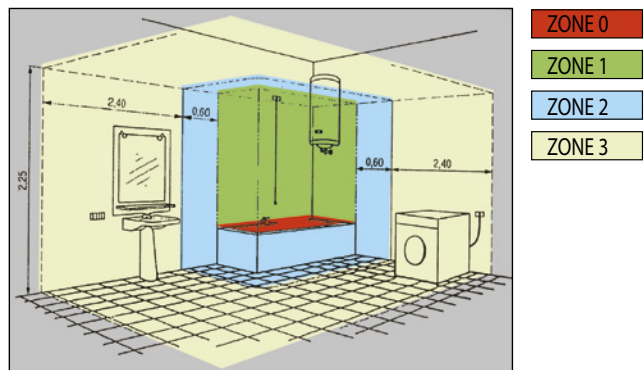
Extraction is always made from humid/polluted premises: kitchens, laundries, toilets, bathrooms, bars... To choose the fan airflow needed for a specific application, use the following calculation:

$$\text{Airflow} = \text{volume of the room in m}^3 \times \text{number of air changes per hour}$$

Type of room	Air change per hour
Kitchens	6 - 10
Bathrooms and shower rooms	8 - 12
Toilets	8 - 10
Public toilets	10 - 15
Restaurants and bars	10 - 12

Setting the fan correctly

- Fans should always be mounted in the furthest window, wall or ceiling from the main source of air replacement to ensure airflow across the room and avoiding short circuiting of air movement.
- Air replacement should be ensured via internal grilles in the door, ceiling or wall.
- Fans should be located as high as possible in the window or wall nearest to smells or streams but not directly above eye-level grilles or cooker hoods.



- If installing in a bathroom, the fan must be located where it cannot be touched by a person. Dynair® range of 12 Volt SELV fans (Safety Extra Low Voltage) can be installed in zone 1. Fans with IPX4 protection can be installed in zone 2. Fans with an IPX2 protection must be installed in zone 3.

Choosing the right Dynair® version

IDEAL SOLUTION
 SUITABLE
 NOT RECOMMENDED

TYPE OF PREMISE	STANDARD	PULL CORD SWITCH	TIMER/COMFORTIMER	MHT / COMFORT HYGRO	MHY SMART	PIR	2 SPEED
TOILET	✓	✓	☺	✓	✗	✓	✓
PUBLIC TOILET	✓	✓	✓	✓	✗	☺	☺
BATHROOM	✓	✓	✓	☺	☺	✗	✓
SHOWER ROOM	✓	✓	✓	✓	☺	✗	✓
KITCHEN	☺	☺	✓	✓	✓	✗	✓
LAUNDRY	✓	✓	✓	☺	✓	✗	☺
OFFICE	✓	✓	✓	✗	✗	✗	☺

Operation

STANDARD version
Light/remote control switch.

PULL CORD switch

TIMER
Integral electronic timer adjustable from 3 to 25 minutes.

COMFORTIMER
Microchip Timer version adjustable from 3 to 25 mn with overrunning at low speed for an energy saving up to 64% compared to a standard timer version. The low speed guarantees increased silence and energy saving though maintaining a fully satisfying exhausting efficiency. Version particularly suitable for hotels, hospitals, private homes and for all those applications where silence is a must.

MHT humidity control
Integral humidity control adjustable from 40 to 80% of R.H.

MHY Smart humidity control
Provided with the latest microchip technology. Operation: automatic and progressive increase / decrease of the motor speed according to the percentage of R.H.

COMFORT HYGRO
Combines to Comfortimer technology a microchip humidity sensor adjustable from 40 to 80% of R.H.

P.I.R.
Passive infra-red sensor with integral adjustable timer from 3 to 25 minutes.

12 VOLT
Low voltage version.

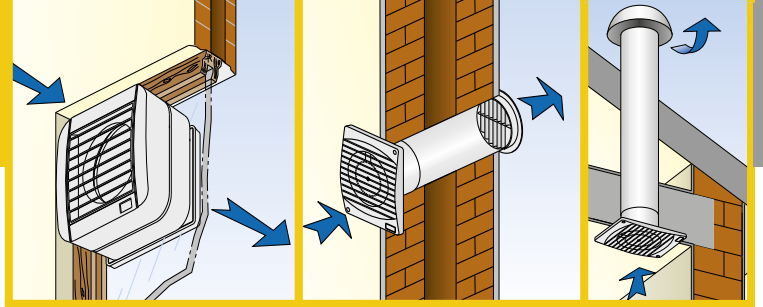
2 V
Double speed version (24 hours running at the lowest speed).

EC MOTOR
High efficiency, electronically controlled, brushless motor.

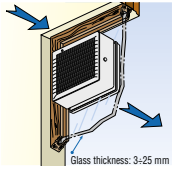


AXIAL FANS

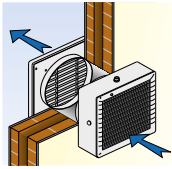
Axial fans are designed to extract large volumes of low pressure air directly to the outside or over short duct lengths. They can be suitable for wall, window, duct and ceiling application.



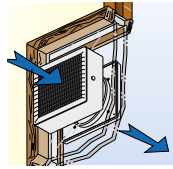
Window installation



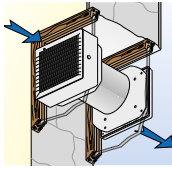
WINDOW



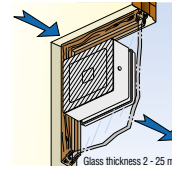
WALL



DOUBLE GLASS



DOUBLE WINDOW



MINI WINDOW



WINDOW

- Complete range: 6, 9, 12 inches
- Automatic versions, potentiated or low capacity.
- 9" and 12" (automatic versions) suitable for reverse running.
- Ideal for commercial environments.
- Airflow up to 1.400 m³/h.
- Accessories for double window, double glazed window and wall installation upon request.



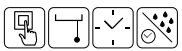
MINI WINDOW

- 3 sizes: ø100, 120, 150 mm with external gravity shutter
- Model 100 available with automatic operation and fixed external grille

Wall and ceiling installation



AXY



- Complete range Ø 100, 120, 150 mm
- Model AXY100 A with electric opening of the grille.



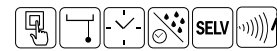
AXY TREND



- Complete range ø 100, 120, 150 mm.
- Airflow up to 315 m³/h
- Innovative design with flat front cover and lateral intake.
- Ball bearing motor
- Model AXY TREND EC 2V with EC brushless motor in Ø100 mm
- Back-draught shutters



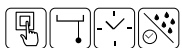
AXY STYLE



- Complete range Ø 90, 100, 120, 150 mm with neon running light.
- Back draught shutters on models 100, 120, 150



AXY WALL



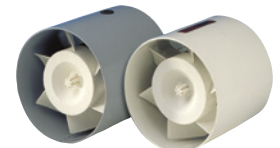
- Complete range Ø 100, 120, 150 mm
- Available with fixed grilled (AXY GF), Gravity shutter (AXY GG) and Automatic shutter (AXY A)
- Airflow up to 320 m³/h



JET



- Complete range ø 100, 120, 150 mm.
- Airflow up to 320 m³/h.
- Back draught shutters upon request.
- Compact and easy installation.



IN WALL

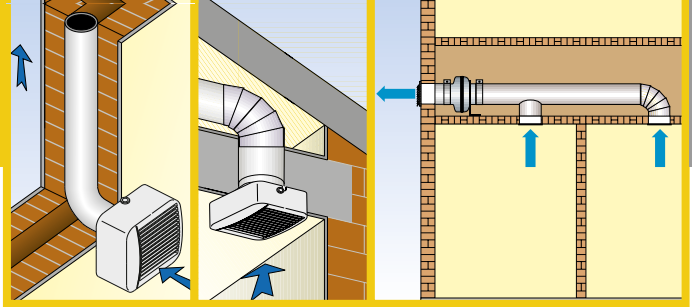


- Complete range 100, 120, 150 mm
- Suitable for intake / extract ventilation
- Ideal for conveying air between two separate rooms
- Invisible and efficient: (no fan into the room)
- Airflow up to 320 m³/h
- Metal or Technopolymer versions



CENTRIFUGAL FANS

Centrifugal fans are designed to extract air over long distances and to overcome the resistance of long length and curved ducting. They are suitable for wall, ceiling, roof installation, in single or multiple ducts.



Duct installation



CELIX



- Unique model for duct Ø 100 mm with central outlet.
- Innovative design with flat front cover and lateral intake.
- Airflow 97 m³/h - Pressure 151 Pa
- Available with EC brushless motor
- Sliding filter in PP, removable and washable
- Back draught shutters



DYPREX



- Powerful centrifugal duct fan Ø 100 mm with decentralised outlet.
- Innovative design with flat front cover and lateral intake.
- Suitable for surface or built-in installation (wall/ceiling mounted).
- Airflow 221 m³/h - Pressure 208 Pa
- Casing for built-in installation on request
- Removable and washable filter in PP
- Back draught shutters

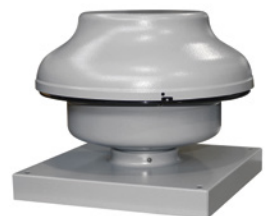
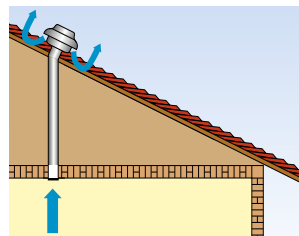
Outdoor installation



TURBO SMOKE



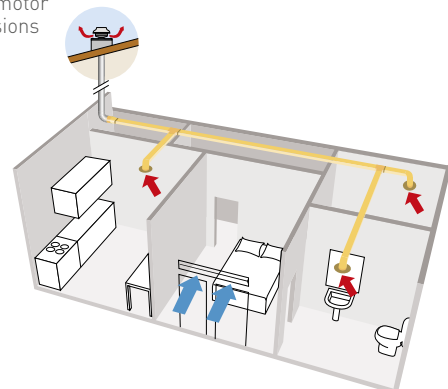
- Ideal for improving the draught of residential fireplaces
- Suitable for chimneys with a section of max 150 x 150 mm and air temperature of max. 200°C in continuous running
- Easy installation (just Plug & Play). Supplied with counterbase to wall-up, plug-in junction box with service switch, eyebolts and electronic speed control R15.
- Airflow 850 m³/h - Pressure 190 Pa
- Steel or copper versions.



DOME



- 7 models Ø100 to 315 mm
- Compact sizes, available with or without square roof curb.
- Easy and cost-effective solution for a centralised ventilation requirement.
- Airflow up to 1222 m³/h - Pressure up to 838 Pa
- Ball bearing motor
- AC or EC versions





CENTRIFUGAL FANS



In-Line installation



LINE METAL



- 11 models Ø100 to 315 mm.
- Airflow up to 1.439 m³/h - Pressure up to 742 Pa.
- Easy and cost-effective solution for a centralized ventilation requirement.
- Wall fixing brackets included.
- Ball-bearing motor.
- Backward curved blades
- AC or EC versions



LINE PLAST



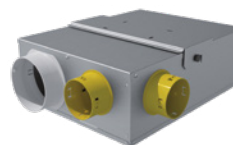
- 4 models with Ø from 100 to 160 mm
- Lightweight and silent
- Made in self-extinguishing V2 technopolymer



COMPACT BOX



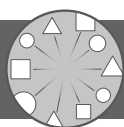
- Super-slim centrifugal box Ø 125 mm (1 to 3 spigots Ø 80 mm)
- AC or EC versions
- Max airflow 310 m³/h
- All models speed controllable



PLURIBOX



- Super-slim centrifugal box Ø 125 mm (3 spigots Ø 80 mm)
- AC or EC versions
- Max airflow 460 m³/h
- All models speed controllable



SENSORS - CONTROLLERS - ACCESSORIES

SENSORS



R10 TIMER

Remote timer

- Electronic timer, adjustable from 3 to 25 minutes

R10 Sensors

- Surface or built-in installation
- Suitable for home automation systems
- Max load 4A,
- 110 x 80 x 42 mm



R10 HY

Remote Humidity Sensor

- The sensor automatically switches ON/OFF the fan according to the detected level of relative humidity, adjustable from 40 to 90%.



R10 P.I.R.

Remote Passive Infrared Sensor

- The fan goes on any time the sensor detects a human presence in the room
- Provided with integral delay timer adjustable from 3 to 25 minutes, which keeps the fan running for the pre-set period after the room is vacated
- Ideal solution for public toilets.



CO2

Sensor

The sensor automatically switches the fan on when it detects a CO₂ concentration in a range of 500 to 2000 ppm.

REVERSIBLE SPEED CONTROLLERS



RVS/R
3 speeds
0,5A



RVS/R
5 speeds
0,5A



RVS/R PLUS
6 speeds
1,5A

SPEED CONTROLLERS WITH TRANSFORMER



RLS 2V
2 speeds



RLS 3V
3 speeds



RVS
5 speeds
0,5A



RVS1
6 speeds
1,5A

ELECTRONIC SPEED CONTROLLERS

Infinitely variable electronic controllers by potentiometer



R10
1A



R15
1,5A



RV-EC
0-10V



RV1
1 - 4A

A wide range of ventilation accessories is available.

DECENTRALIZED HEAT RECOVERY UNITS



DYREC^{duo}₁₀₀

DYREC^{duo}₁₅₀

Ø100 - 150 mm
Wireless
technology



HEAT RECOVERY UP TO **90%**

DYREC^{duo}₁₀₀ SILENT

DYREC^{duo}₁₅₀ SILENT

Ø100 - 150 mm
High acoustic
insulation



STANDARD
version



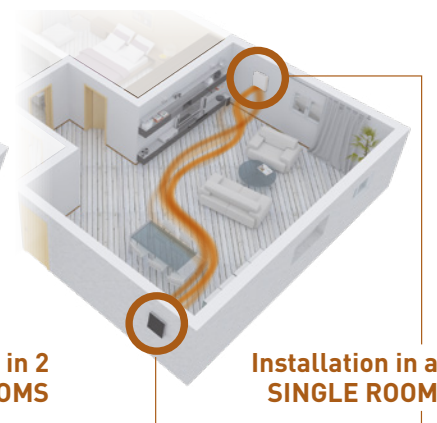
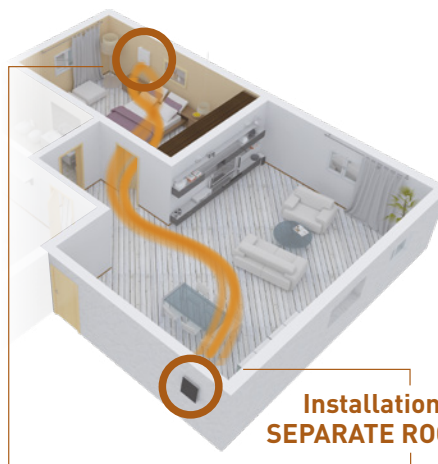
HUMIDITY CONTROL
version



RC Version with
REMOTE CONTROL

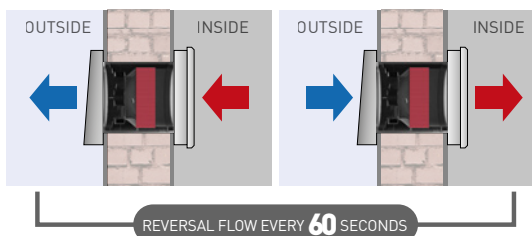
IDEAL IN BEDROOMS AND LIVING ROOMS

Install 2 units to obtain an optimized efficiency and a better airflow balancing.



- Thermal efficiency **90%**
- HRU with alternate flow (push-pull type)
- High efficiency filtering system placed on the heat exchanger
- Telescopic pipe placed adaptable to the wall thickness (**220 ÷ 1000 mm**)
- Airflow up to **70 m³/h**
- Easy installation
- Free cooling function to prevent heat exchange if not needed
- Smart functions: speed boost mode through humidity control or sensors, delay timer, sleep mode, flow direction control.

CERAMIC HEAT EXCHANGER





The headquarter of Maico Italia S.r.l., Lonato del Garda (Brescia)

6DE1130-10/2025



Maico Italia S.r.l.
Via Maestri del Lavoro, 12 - 25017 Lonato del Garda (Brescia) Italia
Tel. +39 030 9913575 - sales@maico-italia.it - www.maico-italia.it



Member of:



We reserve the right to modify any technical data without notice.
Different voltage and frequency upon request.

All trademarks are the property of Maico Italia S.r.l. - All rights reserved.

Follow us:

