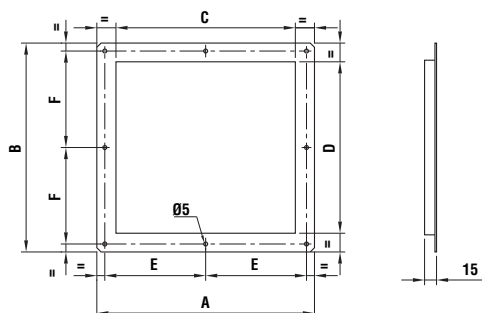


**FLANGIA PREMENTE - OUTLET FLANGE**

La flangia viene montata sulla bocca premente del ventilatore e facilita la connessione con la canalizzazione.

*The flange is fitted on fan outlet and allows an easier connection to the duct.*



Cod.	TIPO TYPE	A	B	C	D	E	F
5B00102	7/7	273	262	225	215	126,5	121
5B00107	9/7	273	300	225	253	126,5	140
5B00110	9/9	340	300	292	253	160	140
5B00113	10/8	317	340	260	282	146,5	158
5B00116	10/10	383	340	326	282	179,5	158
5B00119	12/9	365	395	304	333	170,5	187
5B00122	12/12	450	395	388	333	213	187
5B00123	15/11	426	460	365	395	201	218
5B00125	15/15	526	460	465	395	251	218
5B00126	18/13	498	544	428	474	234	257
5B00129	18/18	618	544	548	474	294	257

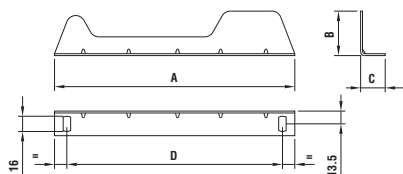
Dimensioni in mm / Dimensions in mm

**STAFFE DI FISSAGGIO - SUPPORT FEET**

Consentono l'ancoraggio del ventilatore.

Possibilità di orientamento della bocca premente di 90° in 90°.

*Used for fan fitting. Possibility of orientation of the fan outlet by steps of 90°.*



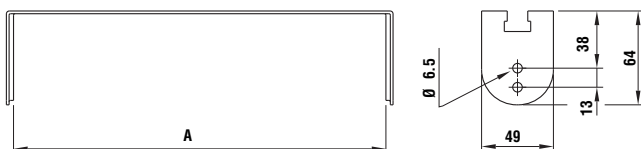
Cod.	TIPO TYPE	A	B	C	D
5PI2981	7	254	47	26	227
5PI2985	9	325	102	26	297
5PI2989	10	363	102	26	339
5PI2993	12	434	144	26	407
5PI2997	15	521	164	26	494
5PI2998	18	635	186	26	608

Dimensioni in mm / Dimensions in mm

**SUPPORTO MOTORE - MOTOR SUPPORT**

Si dispone trasversalmente alla chiocciola permettendo il montaggio del motore in esecuzione 14/D.

*It is arranged across the casing allowing the assembly of the motor in execution 14/D.*



Cod.	TIPO TYPE	A
5SU3002	7/7 - 9/7	232
5SU3003	9/9	300
5SU3004	10/8	266
5SU3005	10/10	333
5SU3006	12/9	313
5SU3007	12/12	396
5SU3008	15/11	373
5SU3009	15/15	473
5SU3010	18/13	436
5SU3011	18/18	556

Dimensioni in mm / Dimensions in mm

SEZ.  
1.8